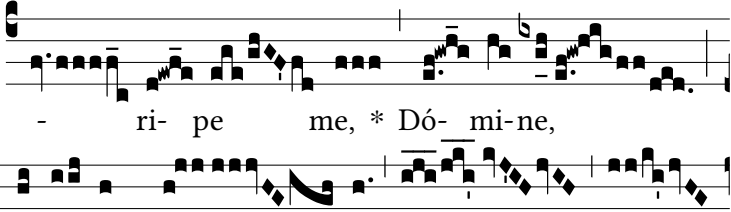


Grad.

3.

E



ri- pe me, * Dó- mi- ne,

de in-í- cis me- is :



do- ce me fá- ce- re vo- luntá-



tem tu- am.



Ψ. Li- be- rá- tor me- us,



Dó- mi- ne, de génti-



bus i- ra- cún- dis : ab insurgén-



ti- bus in me ex- al- tá- bis me : a vi- ro



in- íquo * e- rí- pi- es me.

