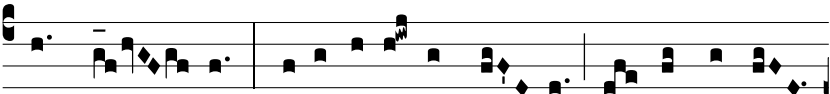


Intr.
1.

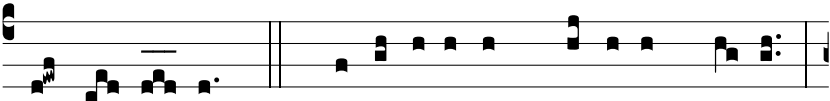
R



O-rá-te * cæ-li dé-su-per, et nu-bes plu-



ant ju-stum : ape-ri-á-tur ter-ra, et gé-rmi-net



Sal-va-tó-rem. *Ps.* Cæ-li enárrant gló-ri-am De-i : *



et ó-pe-ra mánu-um e-jus annúnti-at firmamén-tum.



Gló-ri-a Patri. E u o u a e.